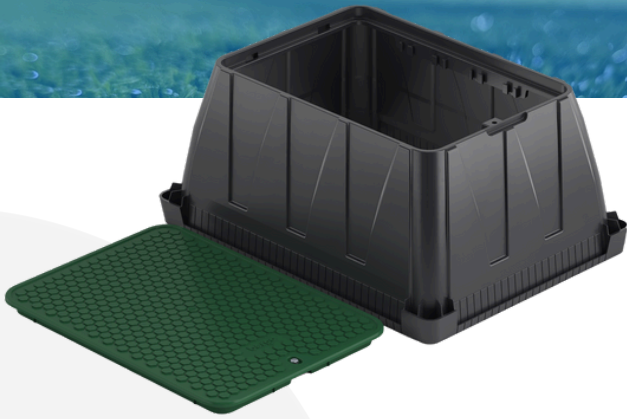


Valve box

JUMBO

Product data sheet



Valve Box JUMBO

The larger variant of the box is designed for complex installations, making it ideal for professional applications or more advanced irrigation projects. It facilitates manual water access for hand watering and offers even greater configuration options when expansion is required. Dedicated accessories such as the Rail or Cover Panel provide flexibility tailored to specific solutions. The design is perfect for large gardens or residential developments, ensuring both durability and elegance.

Features

➤ Ease of Installation

Specially designed cutouts at the bottom of the box allow for quick and easy hole creation using commonly available household tools. This feature enables efficient installation of multiple systems simultaneously.

➤ High Durability

The box boasts exceptional resistance to damage, dirt, year-round weather conditions, and acts of vandalism, thanks to its reinforced construction. An additional stabilizing ring ensures stability once installed in the ground.

➤ Simple and Controlled Access

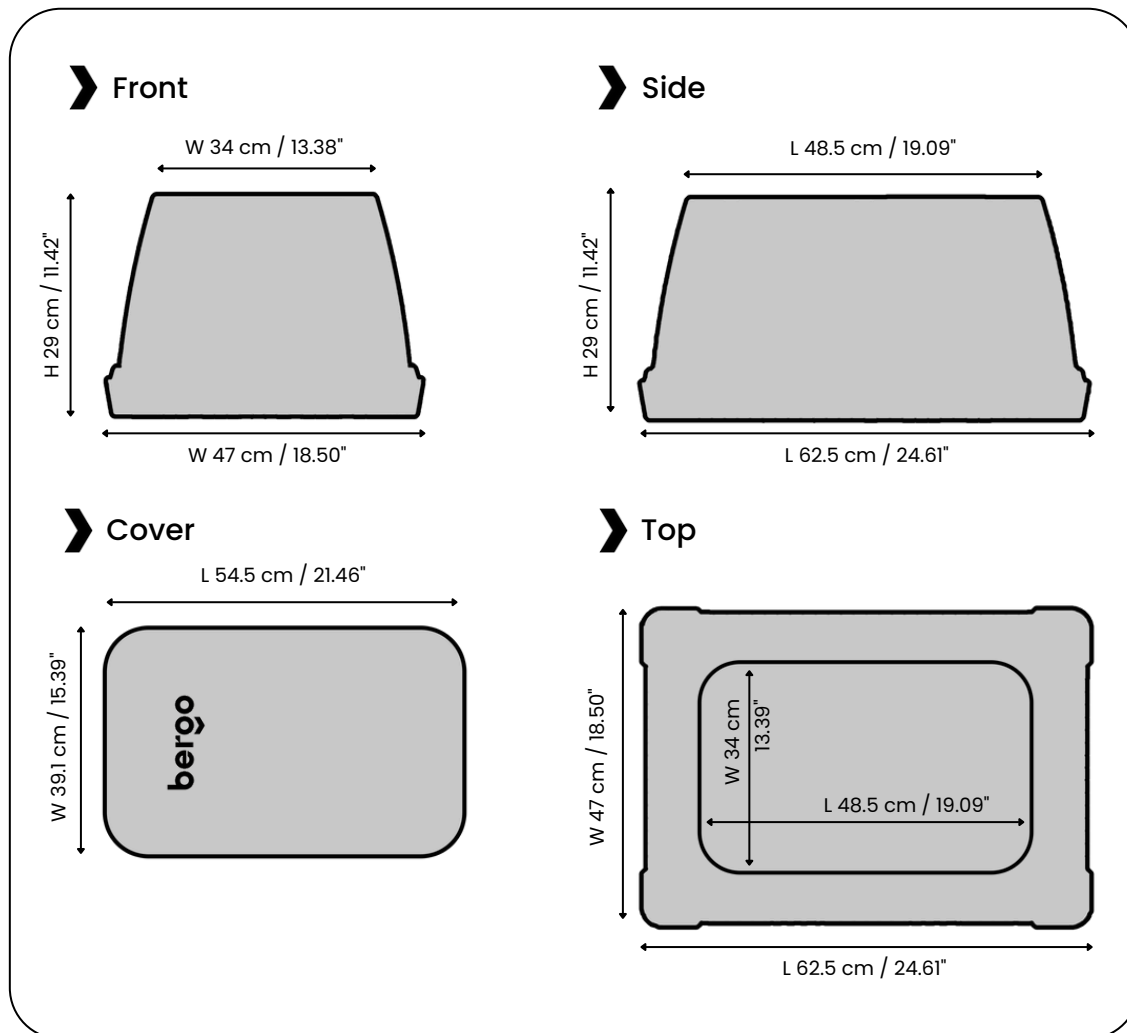
Installation, maintenance, or replacement are incredibly straightforward and quick. The spacious interior allows for convenient operation inside. The easy-open and snap-shut lid mechanism eliminates the need for additional tools when access is required. At the same time, unauthorized access is prevented with the use of a security screw.

➤ Even More Space

Designed with the most complex systems in mind, it provides ample room for additional installations, devices, and accessories. The increased space ensures more comfortable servicing and efficient handling of installed equipment.



Specification



Type	Valve box
Material	Polypropylene
Color versions	2: Black, Green
Weight	6.35 kg / 13.99 lbs